

- All steel construction guarantees durability and stability for production, laboratory and quality control applications.
- Dual speed controls are optimally positioned to adjust test and return travel rates of the drive assembly.
- Drive assembly accepts an optional universal mounting plate, enabling the interfacing of a large selection of force gauge models(contact Shimpo for specific models).
- 4 digit LED display indicates displacement or rate of the drive assembly.
- Analog output is convenient for data acquisition requirements.

Specifications

Model	Low speed:FGS-50XB-L	High speed:FGS-50XB-H
Capacity	500N	
Travel speed	50 ~ 120mm/min	20 ~ 500mm/min
Stroke	140mm	
Weight	23kg	
Power source	AC100V, 120V, 230V	

Dimensions

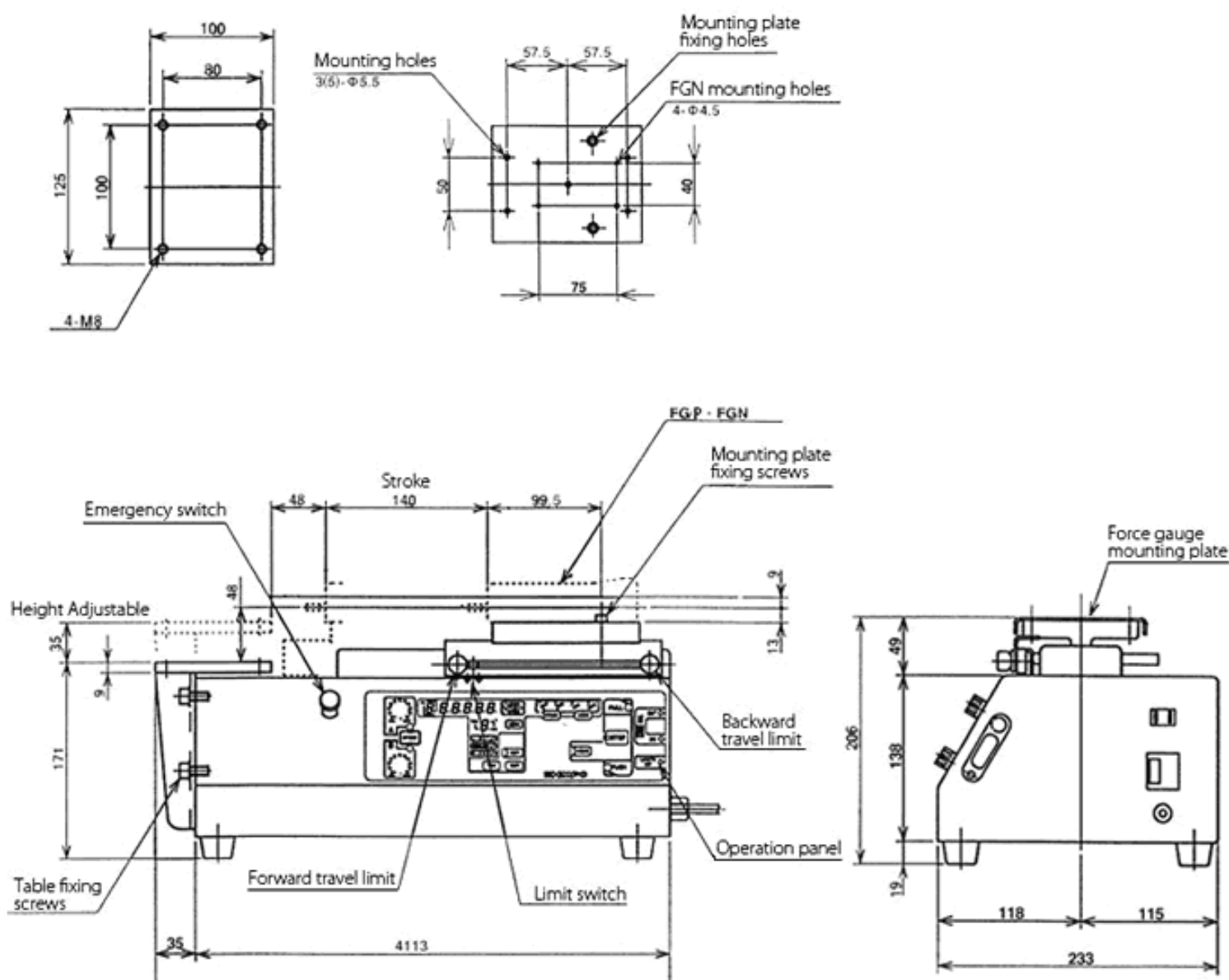
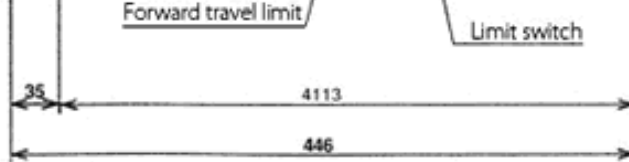


Table fixing
screws



19

